



Athens, 8<sup>th</sup> of March 2013

## PRESS RELEASE

### Product Recall due to detection of horse DNA

With more available laboratory results after relevant controls of the Attica, Central Macedonia and East Macedonia and Thrace Regional Directorates of EFET, consumers are informed that horse meat DNA was detected in the following products:

- «Kebab of Armenian type» with best before date 7/8/2013,
- «Meat product Soutzoukaki 80 g» (in Greek: «Σουτζουκάκι 80 γρ.») with best before date 24/1/2014,
- «Burger 130 g» (in Greek: «Μπιφτέκι 130 γρ.») with best before date 27/11/2013 and
- «Burger 130 g» (in Greek: «Μπιφτέκι 130 γρ.») with best before date 12/02/2014

which are produced by the company "T&T Foods AE" (630 80 Lakoma Chalkidikis) and distributed by the company "Choutos Catering S.A."

- Frozen Kebab «ARISTON» (in Greek: «ΑΡΙΣΤΟΝ») with production date 31.12.2012 Lot 036512 and use by date 31.12.2013

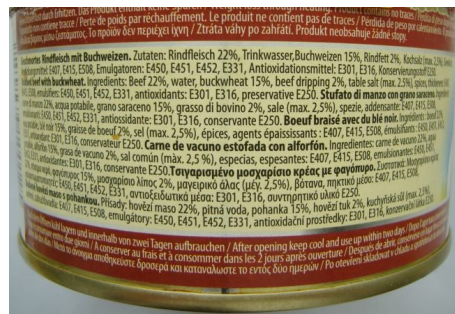
which is produced by the "LADAS & SIA AVEE" company (19 Ortansias street, Acharnai, Attica). Raw material supplier of the meat is the enterprise "Zikoudi V. EPE".

- Intermediate product «Soutzouki» (in Greek: «Σουτζούκι») of the company "**MPATANIAN S.A.**", based at the Industrial Zone of Koropi, following control by the Directorate of Rural Economy and Veterinary of the East Attica Prefectural Unit,

which confirmed the relevant control previously announced by the press release of EFET on the 28<sup>th</sup> February 2013.

In addition, EFET, was informed through the Rapid Alert System for Food and Feed (RASFF) by the German Authorities regarding distribution of a tin product, in which horse DNA has been detected.

The involved product is a tin of sauté bovine meat with buckwheat, with trade name "ГОВЯДИНА" in 325 g package, of Letonian origin. The product (photo given below) is distributed in Greece by the companies "CHARATSIDOU E.-TSIKIRIDOU A. S.A." (8 Petrou Ralli street, Rouf, Athens) and "KAKAFIKAS S. and SIA EPE" (219 El. Venizelou street, Kallithea, Athens).



EFET requested the immediate recall/withdrawal of the above products from the internal market. Relevant controls are in progress.

In case of new positive results the foreseen measures are going to be implemented and consumer update will follow.

Consumers can visit the EFET website [www.efet.gr](http://www.efet.gr) for additional information on the subject.